

Air Force Chain of Command

Commander In Chief, President of the United States
Secretary of Defense
Secretary of the Air Force
Air Force Chief of Staff

Organization of the Air Force

Air Force Instruction 38-101

Major Commands

A major command (MAJCOM) is a major subdivision of the Air Force, assigned a major segment of the USAF mission. They are directly subordinate to Headquarters, US Air Force and possess the full range of staff functions needed to perform required tasks.

Air Force Major Commands

ACC - Air Combat Command, HQ: Langley AFB, VA
AETC - Air Education and Training Command, HQ: Randolph AFB, TX
AFMC - Air Force Material Command, HQ: Wright-Patterson AFB, OH
AFRC - Air Force Reserve Command, HQ: Robins AFB, GA
AFSC - Air Force Space Command, HQ: Peterson AFB, CO
AFSOC - Air Force Special Operations Command, HQ: Hurlburt Field, FL
AMC - Air Mobility Command, HQ: Scott AFB, IL
PACAF - Pacific Air Forces, HQ: Hickam AFB, HI
USAFE - United States Air Forces in Europe, HQ: Ramstein AB, Germany

Wings

A wing has a distinct mission with significant scope. It is responsible for maintaining the installation or has several squadrons in more than one dependent group. A wing has approximately 1,000 to 5,000 assigned members. There are three types of wings:

Operational Wing: A wing that has an operations group and related operational mission activity assigned to it. An operational wing is capable of self-support in functional areas like maintenance, supply, and munitions, as needed.

Air Base Wing: A wing that performs a support rather than an operations mission. It maintains and operates a base. An air base wing often provides functional support to a MAJCOM headquarters.

Specialized Mission Wing: A wing that performs a specialized mission and usually does not have aircraft or missiles assigned to it. For example, intelligence wing, training wing, and so on.

Groups

A group is level of command below the wing. It is a tactical echelon without significant staff support that usually has two or more subordinate units and approximately 500 to 2,000 assigned members.

Squadrons

The squadron is the basic group in the Air Force. A squadron may be either a mission unit, such as an operational flying squadron, or a functional unit, such as civil engineers, security forces, etc. Squadrons vary in size according to responsibility, but usually have 50 to 750 assigned members.

Flights

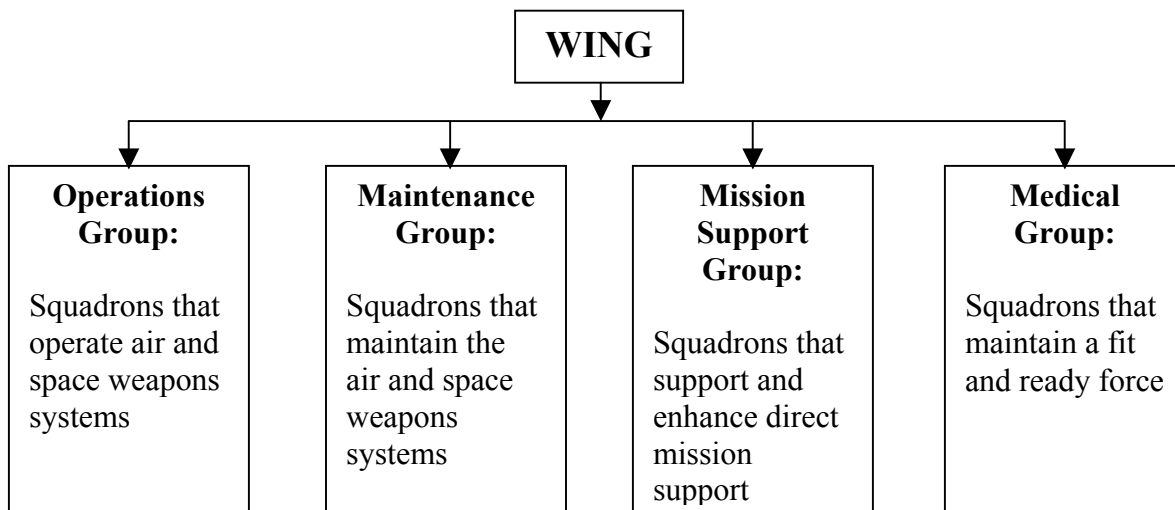
Squadrons are divided up into smaller elements of flights, usually performing specific missions.

Centers

A center is a named unit that performs a specialized mission. A primary characteristic is that it performs most of its mission within a large complex at one location; for example, air logistics centers and test centers.

Air Force Wing Organization

The wing structure furthers the Air Force's abilities to sustain home station operations and rapidly deploy for worldwide operations.



A good place for more information about Air Force bases and commands is the January issue of Airman Magazine, which is published every month. Each unit on base gets a few copies, but they're available on-line, also. The January issue every year has all kinds of terrific information about the Air Force. Go to Airman Magazine at <http://www.af.mil/news/airman/indxflas.html> enter, and click on "Back Issues", then go to the January issue for the year.